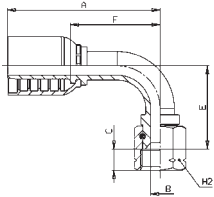




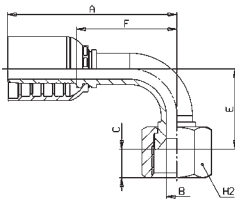
OPS TYPE

JIC STANDARD CONNECTIONS



OPS22792

90° JIC FEMALE 37° CONE SEAT - SAE J516/J514
(THRUST-WIRE NUT)

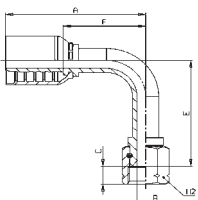


OPS22793

90° JIC FEMALE 37° CONE SEAT - SAE J516/J514
(SLIP-ON NUT)

PART. REF.	HOSE BORE		THREAD	DIMENSIONS inch						
------------	-----------	--	--------	--------------------	--	--	--	--	--	--

	DN	inch	Size		B	A	C	E	F	H ₂
OPS22792-06-05	10	3/8"	- 06	1/2" - 20	0.22	2.34	0.37	1.04	1.19	0.67
OPS22792-06-06	10	3/8"	- 06	9/16" - 18	0.28	2.55	0.38	1.28	1.39	0.75
OPS22792-08-08	12	1/2"	- 08	3/4" - 16	0.37	2.95	0.42	1.61	1.73	0.87
OPS22793-08-10	12	1/2"	- 08	7/8" - 14	0.37	2.99	0.50	1.42	1.77	1.06
OPS22792-10-10	16	5/8"	- 10	7/8" - 14	0.49	3.47	0.50	2.07	2.11	1.06
OPS22793-10-12	16	5/8"	- 10	1.1/16" - 12	0.49	3.39	0.56	1.97	2.03	1.25
OPS22792-12-12	19	3/4"	- 12	1.1/16" - 12	0.55	4.13	0.56	1.86	2.03	1.25
OPS22792-12-16	19	3/4"	- 12	1.5/16" - 12	0.78	4.13	0.60	2.11	2.03	1.62
OPS22792-16-16	25	1"	- 16	1.5/16" - 12	0.75	4.72	0.60	2.19	2.40	1.62
OPS22792-20-20	31	1.1/4"	- 20	1.5/8" - 12	0.97	6.38	0.64	3.43	3.78	1.97
OPS22792-24-24	38	1.1/2"	- 24	1.7/8" - 12	1.19	7.17	0.73	4.09	4.49	2.36



OPS24792

90° LONG DROP JIC FEMALE 37° CONE SEAT - SAE J516/J514
(THRUST-WIRE NUT)

PART. REF.	HOSE BORE		THREAD	DIMENSIONS inch						
------------	-----------	--	--------	--------------------	--	--	--	--	--	--

	DN	inch	Size		B	A	C	E	F	H ₂
OPS24792-08-08	12	1/2"	- 08	3/4" - 16	0.37	2.80	0.42	2.43	1.57	0.87
OPS24792-12-12	19	3/4"	- 12	1.1/16" - 12	0.55	4.13	0.56	3.73	2.03	1.25
OPS24792-16-16	25	1"	- 16	1.5/16" - 12	0.75	4.72	0.60	4.34	2.40	1.62