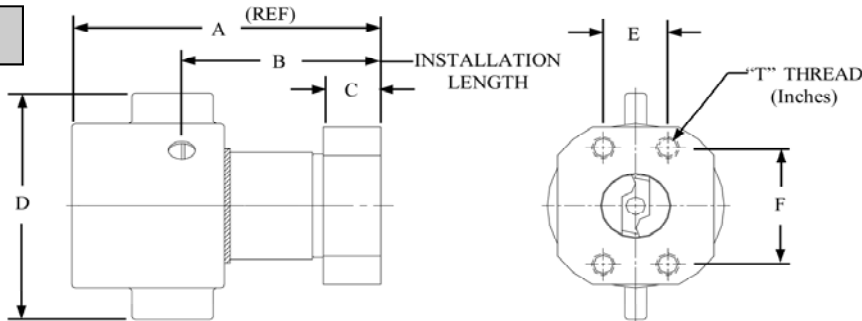


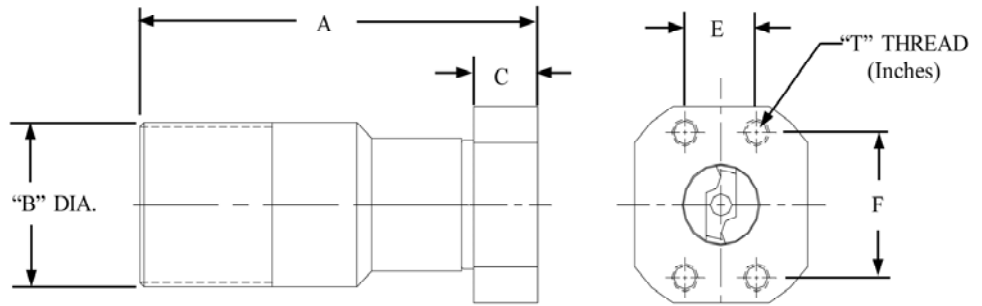
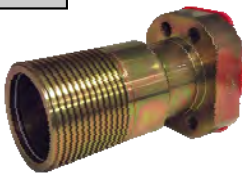
## FLANGE PORT COUPLERS - CODE 61

### COUPLER



COUPLER DASH SIZE	COUPLER PART NUMBER	FLANGE DASH SIZE	WORKING PRESSURE (Max PSI)	A	B	C	D	E	F	T THREAD SIZE (UNC)	WEIGHT (lbs)	DUST PLUG PART NUMBER
12	6TVC5-FP12	12	5,000	4.00	2.75	.88	3.00	.88	1.88	3/8-16		5TV-DP-12
16	6TVC5-FP16	16	5,000	4.61	3.02	.88	3.75	1.03	2.06	3/8-16	4.29	5TV-DP-16
20	6TVC4-FP20	20	4,000	5.68	3.66	1.06	4.51	1.19	2.31	7/16-14	7.22	5TV-DP-20
24	6TVC3-FP24	24	3,000	6.38	4.08	1.06	4.75	1.41	2.75	1/2-13	10.51	5TV-DP-24
32	6TVC3-FP32	32	3,000	7.41	4.34	1.06	6.75	1.69	3.06	1/2-13	19.73	5TV-DP-32
40	6TVC2/5-FP40	40	2,500	8.56	5.07	1.69	8.01	2.00	3.50	1/1-13	38.47	5TV-DP-40
48	6TVC2-FP48	48	2,000									5TV-DP-48

### NIPPLE



COUPLER DASH SIZE	NIPPLE PART NUMBER	FLANGE DASH SIZE	WORKING PRESSURE (Max PSI)	A	B	C	E	F	T THREAD SIZE (UNC)	WEIGHT (lbs)	DUST PLUG PART NUMBER
12	6TVN5-FP12	12	5,000	4.43	1.75	.88	.88	1.88	3/8-16		5TV-DC-12
16	6TVN5-FP16	16	5,000	5.33	2.25	.88	1.03	2.06	3/8-16	4.00	5TV-DC-16
20	6TVN4-FP20	20	4,000	6.61	2.63	1.06	1.19	2.31	7/16-14	6.49	5TV-DC-20
24	6TVN3-FP24	24	3,000	7.33	3.25	1.06	1.41	2.75	1/2-13	10.11	5TV-DC-24
32	6TVN3-FP32	32	3,000	8.39	4.00	1.06	1.69	3.06	1/2-13	16.07	5TV-DC-32
40	6TVN2/5-FP40	40	2,500	10.39	5.25	1.69	2.00	3.50	1/2-13	28.64	5TV-DC-40
48	6TVN2-FP48	48	2,000								5TV-DC-48