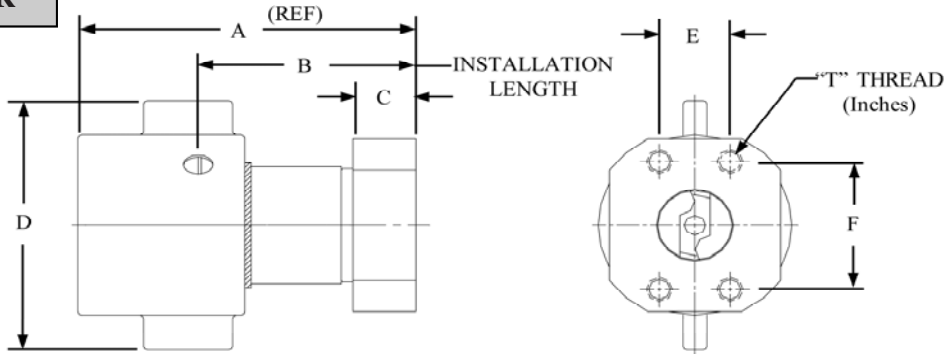




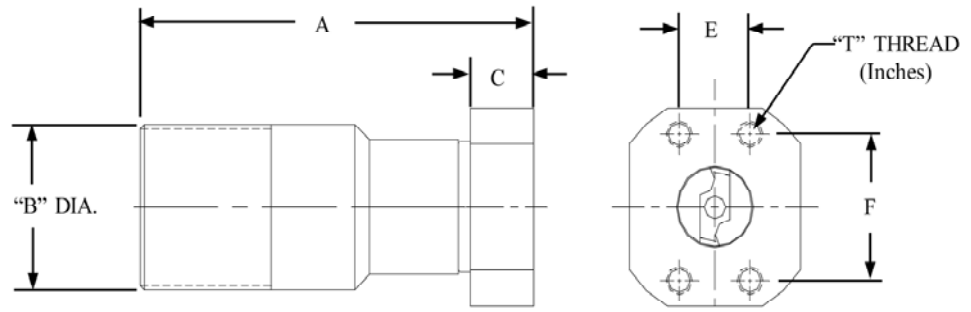
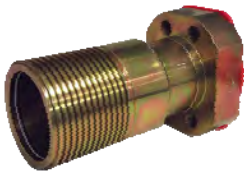
FLANGE PORT QUICK COUPLERS - CODE 62

COUPLER



COUPLER DASH SIZE	COUPLER PART NUMBER	FLANGE DASH SIZE	WORKING PRESSURE (Max PSI)	A	B	C	D	E	F	T THREAD SIZE (UNC)	WEIGHT (lbs)	DUST PLUG PART NUMBER
12	6TVC6-FP12	12	6,000	4.13	2.88	.94	3.00	.94	2.00	3/8-16		5TV-DP-12
16	6TVC6-FP16	16	6,000	4.85	3.26	1.06	3.75	1.09	2.25	7/16-14	5.25	5TV-DP-16
20	6TVC6-FP20	20	6,000	5.88	3.86	1.12	4.51	1.25	2.63	1/2-13	8.26	5TV-DP-20
24	6TVC6-FP24	24	6,000	6.80	4.50	1.38	4.75	1.44	3.13	5/8-11	13.11	5TV-DP-24
32	6TVC6-FP32	32	6,000	8.07	5.00	1.50	6.75	1.75	3.81	3/4-10	24.62	5TV-DP-32
40	640C6-FP32	40	6,000	8.87	5.38	2.00	8.01	1.75	3.81	3/4-10	45.00	5TV-DP-40

NIPPLE



COUPLER DASH SIZE	NIPPLE PART NUMBER	FLANGE DASH SIZE	WORKING PRESSURE (Max PSI)	A	B	C	E	F	T THREAD SIZE (UNC)	WEIGHT (lbs)	DUST PLUG PART NUMBER
12	6TVN6-FP12	12	6,000	4.56	1.75	.94	.94	2.00	3/8-16		5TV-DC-12
16	6TVN6-FP16	16	6,000	5.57	2.25	1.06	1.09	2.25	7/16-14	4.96	5TV-DC-16
20	6TVN6-FP20	20	6,000	6.81	2.63	1.12	1.25	2.63	1/2-13	7.53	5TV-DC-20
24	6TVN6-FP24	24	6,000	7.75	3.25	1.38	1.44	3.13	5/8-11	12.71	5TV-DC-24
32	6TVN6-FP32	32	6,000	9.05	4.00	1.50	1.75	3.81	3/4-10	20.96	5TV-DC-32
40	640N6-FP32	40	6,000	10.70	5.25	2.00	1.75	3.81	3/4-10	35.00	5TV-DC-40